



P.O. Box 145 • New Richmond, WI 54017 • (715) 246-4884 • www.willowriver.org

Willow River Rod & Gun Club News

Currently there are 339 paid members. Statements for the 2009 club dues will be mailed out in November and December. It is not too late to get your hours in for the reduced annual rate.

The rear double door to the clubhouse will be replaced this fall.

Signage will be posted on the ranges and around the perimeter of the club land. A committee consisting of Brian Headlee and Jessa Nelson will make this happen. A committee looking into the possibility of a carded entry front gate access consists of Jerry Van Houten, John Nysse and Brian Headlee.

The winter archery is to start soon.

The final ARA Rimfire Match is scheduled for Tuesday, October 14th. These events have been very well received to date and the format is modeled so everyone has a good time. The schedule for next year will be set soon. Plans are to have them held every third week.

The final Archery and Trap Leagues standings are listed on our website and also in this newsletter.

The safety signs and noise abatement barriers are presently in place on the pistol range.

The gun racks and shelves have been added to the rifle range shelter. Lower extensions to the gun racks will also be added. There is a low spot between the 100 and 200 yard bunkers that will be leveled. Drainage problems have been addressed on the range in front of the shelter.

A Nomination Committee consisting of Larry Suennen and Mike Reiter will provide names of individuals interested in running for the 2009 WRR&GC's Board of Directors. The terms of Jessa Nelson and Bill O'Rourke are scheduled to expire.

The raffle for a hunting opportunity on the club land will be postponed until next year.

The WRR&GC's deer carcass dumpster for public use presently located at the main gate will not be continued in 2009. Signage will be placed at the main gate stating this fact with public announcements published before the 2009 bow season.

Members are also reminded that the club dumpster located near the club house is for garbage generated on the club's premises only and not for personal use. Over the last few years remodeling scraps, garage sale items and personal garbage has been placed in the dumpster costing the club hundreds of dollars in extra expense. This practice must stop!

2009 Winter Archery Leagues Information

The 2009 Indoor Spot League starts on January 13th and runs for 11 weeks. The league shoots on Tuesdays and Fridays from 5:50 – 10:00 pm. On Saturdays the club house is open from 9 am until 1 pm. Teams will consist of 4 persons who must belong to the club. The cost for adults is \$40.00; age 12-17 is \$20.00 and 11 and under is \$10.00.

The 2009 Indoor Spot League starts on January 14th and 15th and runs for 11 weeks. The shoots will feature several 3D targets and other "fun" items. Ten targets are shot per week. The league shoots on Wednesdays and Thursdays from 5:50 – 10:00 pm. Teams will consist of 2 persons who must belong to the club. The cost for adults is \$60.00; age 12-17 is \$25.00 and 11 and under is \$15.00.

There will be a \$20.00 discount for those who shoot both leagues. Kids will not receive a discount however.

For additional information email Chris Polfus at chrisp@polfus.com or Rich Vetterkind at rich.vetterkind@smcltd.com.

Summer Archery League Final Standings

Pink Cards

Russell's Sport & Bike	120
A1 Archery North	102
A1 Archery South	144
Fatt Matts	51
Adventure Archery	102
Preco Laser	90
Champs A	57

<i>White Cards</i>	
Perfect	93
D.E.Y.	115
Champs 2	101
Lange Decorating	123
Roettgers	104
MKustom	71
Custom Realty	90

<i>Yellow Cards</i>	
Brush Busters	93
Oak Ridge Heating	115
Polfus Implement	101
Treadmill Sports	105
Champs Bar Pigs	82
Dub's Boys	93
Martell Well Drilling	60

<i>Blue Cards</i>	
X-Ring	106
BLAM	117
Designer Logo	99
3 and 1	107
Siren Slingers	84
Prism Plastics	57
Having Fun	68

<i>Youth</i>	
Jr. Hunters	100
Polfus Youth	95
Young Archers	71

Summer Trap League Final Standings

Place/Team:

Laser Dusters	2190
J-See Shooting Supplies	2125.5
On Target #1	2082.5
Claybusters	2076.5
Polfus Implement	2065
Scott Freer Electric	1875.5
Mud Ducks	1857
Valley Agencies	1839.5
Khaos	1622
On Target 2	1220
Brothers Additions	1201.5

Place/Individual:

Terry Condon	22.74
George Gfall	22.11
Brian Headlee	21.41
Jerry Van Houten	20.58
Mike Bixler	20.32
Ted Tschudy	20.05
Dave Balde	19.95
Dave Balde	19.95
Jeff Crocket	19.37
Jeff Chelberg	18.89

Buckthorn Reminder

Now is the time to get out there and do some buckthorn removal. After most of the other trees have shed their leaves, the buckthorn remains leaved, green and easy to identify. Cut the buckthorn near its base then treat the stump with an approved herbicide to prevent the inevitable re-sprouting. The insidious spread of buckthorn is in all probability the most serious threat to our wooded areas and needs to be addressed now before it chokes out our native vegetation.

How to Help All Wildlife

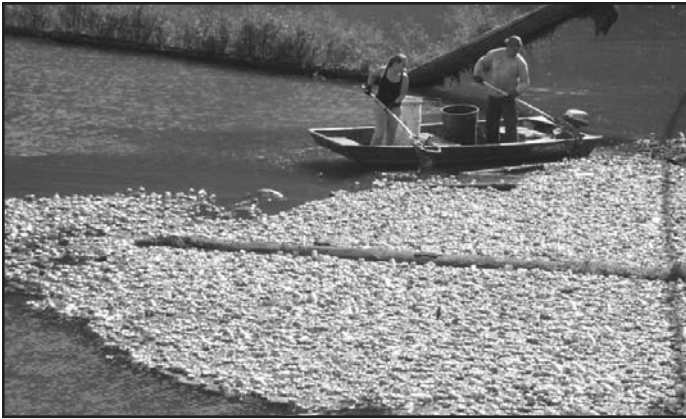
Buy a duck stamp! Duck stamps are required to hunt migratory birds, however, you do not need to be a hunter to purchase and enjoy them. Considered fine art, \$.98 of every duck stamp goes towards acquiring wetland and grassland habitat for birds, endangered and threatened species, and other wildlife. All of the Waterfowl Production Areas in the St. Croix Wetland Management District were purchased with duck stamp dollars. Duck stamps can be purchased at the local post office, some sporting goods stores or at www.duckstamp.com.

Winter Track Counts

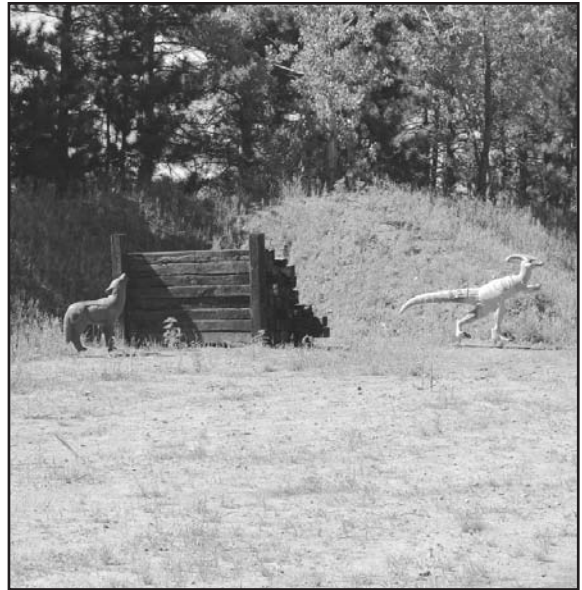
According to Wisconsin Wildlife Surveys, August 2008, Brian Dhuey states, "winter track count surveys gave been conducted in the northern one-third of Wisconsin since the winter of 1977-78. Wildlife managers and researchers document the tracks of bobcat, coyote, fisher, fox, American martin, otter, grey wolf, snowshoe hare and weasel. The number of transect increased for fisher, fox, otter and weasel and decreased for bobcat, coyote, martin, grey wolf and snowshoe hare in 2007-08."

Winter Severity Indices 2007-2008

According to Wisconsin Wildlife Surveys, August 2008, Christopher Jacques states, "this report details the Winter Severity Index (WSI) monitoring the northern forest region of Wisconsin during the winter of 2007-08. Region-wide, this winter was rated as moderate. Average WSI was 70 compared to a 30 year average of 56. (WSI = days 0 degrees or below plus days with 18 inches or more of snow on the ground, from December 1st through April 30th) Moderate to very severe conditions were reported at 21 or 31 stations throughout northern Wisconsin with most severe readings recorded from Iron and Price counties and eastward. Despite widespread moderately severe winter severity values, region-wide weather impacts on the 2008 fawn cohort are expected to be relatively minor.



Apple River Drawdown 2008



Wildlife sightings on the WRR&GC land

Warden Paul's Corner - Firearm, Bow and Crossbow Transportation

With small game hunting seasons underway and the gun deer season around the corner, questions have been asked about transportation of firearms, bows and crossbows in a vehicle. First, a vehicle is defined as any device for moving persons or property or pulling implements from one place to another on land, rails or in the air. Therefore, examples of vehicles include a car, truck, ATV, snowmobile and a bicycle to name a few. A vehicle does not have to have an engine as a bicycle is by definition a vehicle. When transporting a firearm of any type or size (including a muzzleloader), the firearm must be unloaded and completely enclosed in a carrying case when in or on any vehicle whether moving or stationary. For those hunters using handguns, a typical holster is not a legal carrying case as the holster does not completely enclose the handgun. Bows and crossbows must be unstrung or enclosed within a carrying case. Muzzleloaders are considered unloaded if the cap is removed from percussion muzzleloader or the flash pan is cleaned of powder on a flintlock muzzleloader.

For hunters using motor boats to transport firearms, bows and crossbows, while the motor is running, all firearms must be unloaded and bows and crossbows must be unstrung or enclosed within a carrying case. Some exceptions do apply to disabled hunters issued a Class A or B disabled permit.

Shining Wild Animals

Often, during hunter's safety course presentation, the question is asked, "What is shining?" Shining is using a light to locate or "shine" wild animals, typically deer. The light used could be headlights, a flashlight or a high powered portable light. In addition, laser sights on guns, bows or crossbows are lights by definition and are illegal. Many individuals like to shine animals at night just to watch the animals because many of the animals are nocturnal and not able to be seen during daylight hours. Some hunters like to shine wild animals and deer to see where they are

so they can hunt them. The following restrictions apply to shining. It is illegal to use or possess with intent to use, whether or not a firearm, bow or crossbow is in possession, a light for shining wild animals (including vehicle headlights) between the hours of 10 PM and 7 AM from September 15 through December 31. While shining, it is illegal to use or possess with intent to use a firearm, bow or crossbow. Lastly, it is illegal to shine at any time on federal refuges and Waterfowl Production Areas. NOTE: Some areas may prohibit shining by a local ordinance. Check with your local Sheriffs Department to find out if that restriction occurs in your county.

For questions or to report a violation, contact Warden Paul Sickman at 715-684-2914 ext 120. Have a safe and enjoyable hunting season.

Upcoming Events...

- October 30th (*Thursday*)Mourning dove season closes
- November 1st (*Saturday*).....Wild ginseng season closes
- November 2nd, 9th and 16th.....Sundays scheduled for Rifle site in days on the WRR&GC club land,
Contact: Brian Headlee at 246-5322
- November 11th (*Tuesday*)St Croix County Sportsman Alliance November Meeting, Land & Water Conservation Building,
Baldwin, 6:30 pm, Contact: Mike Reiter 715-246-6643
- November 13th (*Thursday*).....Willow River Rod & Gun Club's November Meeting, 7 pm, club land,
Contact: Brian Headlee at 246-5322
- November 17th (*Monday*).....Star Prairie Fish & Game Association's Bucks Night, Ready Randy's,
Contact: Dan Bygd 715-246-6477
- November 22nd (*Saturday*)Open of Deer Gun Season through November 30th
- December 10th (*Wednesday*).....Deadline for spring turkey application
Bear deadline to apply for drawing or preference point
- December 20th (*Saturday*).....Star Prairie Land Preservation Trust's Hiking and Snowshoeing Event, Event,
McMurtrie Preserve, 12-4 pm, Contact Aleisha Miller 715-426-1473

Comments, criticisms or input, please contact Mike Reiter 246-6643 or Jessa Nelson 246-0266

P.O. Box 145
New Richmond, WI 54017

